

# Service Manual

## POS Peripheral Dock **PPD Series**



Version 1.0

© Copyright Fametech Inc. (TYSSO) 2008

## Table of Contents

---

<b>I Part List.....</b>	<b>3</b>
A. Explode.....	3
B. Cables & Connectors.....	5
<b>III System Disassembly.....</b>	<b>8</b>
A. Separate the Monitor from the Base.....	8
B. Disassemble Panel Kit.....	9
C. Disassemble Base Kit.....	14

## Table of Figures

---

Figure 1 Explode of the System.....	3
Figure 2 Cables.....	5
Figure 3 A/D Board Layout.....	6
Figure 4 I/O Board Layout.....	6
Figure 5 Invertor Layout.....	6
Figure 6 OSD Board Layout.....	7

# I Part List

## A. Explode

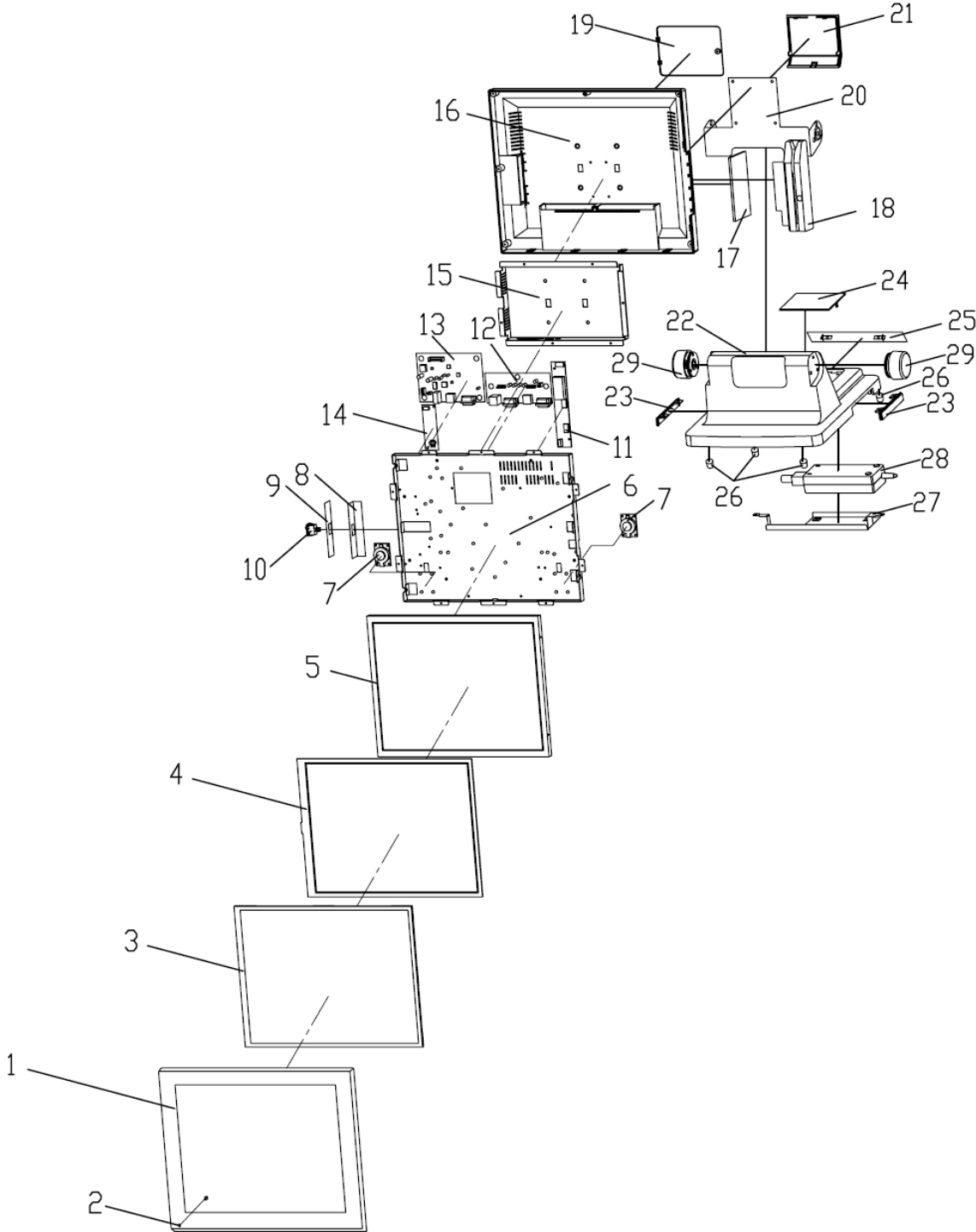


Figure 1 Explode of the System

No.	Part No.	Description	Price(USD)
1	JP-POS-5015-FRONT-COVER-B	Front Cover (Black)	6
	JP-POS-5015-FRONT-COVER-S	Front Cover (Silver)	
2	CP-CBL-POS-7000-LED-PW	Power Indicator	1
3	JP-POS-5050-RUBBER	Touch Panel Rubber	3
4	LT-HT-150F-5RA-G01N-18R-200FH	Touch Panel	50
5	LC-POS-7000-CLAA150XP01Q	LCD Panel	156
6	KP-POS-5700-LCD	LCD Panel Chassis	10
7	NS-POS-5000-HIT-4028-82280	Speakers	5
8	JP-TM-OSD-PLATE	OSD Bracket	3
9	BP-PCBA-TM-OSD	OSD Board	
10	CP-CBL-POS-5700-SW-B15CM	Power Switch	2
11	BP-PART-CUBIC-QF117V1	Invertor	
12	BP-PCBA-PPD-IO-CONN	I/O Board	
13	BP-PART-MON-2023LA-REV-B-V1	A/D Board	
14	BP-PART-THPCBA-COMBO-R5W-3100C	Touch Control Board	
15	KP-TM-5015-IO-BRKT	I/O Bracket	
16	JP-POS-5015-REAR-COVER	Rear Cover	7
17	JP-POS-5715-MSR-COVER-B	MSR Cover (Black)	3
	JP-POS-5715-MSR-COVER-S	MSR Cover (Silver)	
18	BP-SEMI-POS-5700-MSR-KP-B	MSR Kit (Option)	30
	BP-SEMI-POS-5700-MSR-RS-S		
19	JP-POS-6000-BASE-REAR-COVER	Base Rear Cover	1
20	J BP-SEMI-POS-5700-HINGE-HOLDER	Hinge Holder	10
21	JP-POS-5715-HOLDER-COVER	Hinge Holder Cover	2
22	KP-POS-7000-BASE	Aluminum Base	25
23	JP-POS-6000-SIDE-COVER	Base Side Cover	1
24	JP-POS-6000-DISPLAY-COVER	Base Top Cover	1
25	JP-POS-6000-BASE-REAR-COVER	Base Rear Cover	1
26	JP-POS-7000-FOOT-FFS-2	Foot	0.25
27	KP-POS-5715-PWR-HOLDER-BRKT	Power Adaptor Holder	3
28	DP-PWRC-EA11003-ED	Power Adaptor	35
29	JP-POS-7000-HINGE-SWIVEL-B	Hinge Swivel	1

**B. Cables & Connectors**

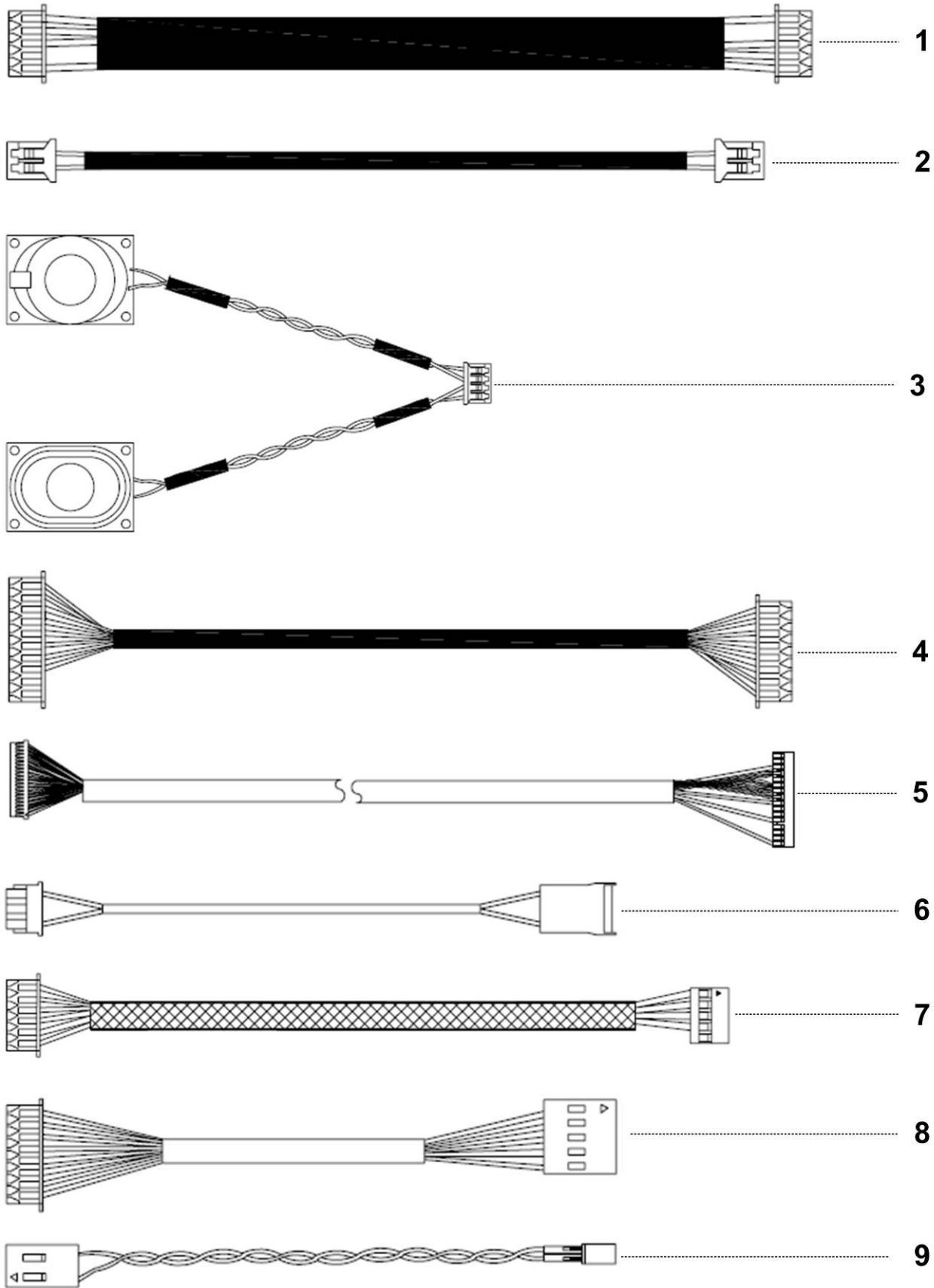


Figure 2 Cables

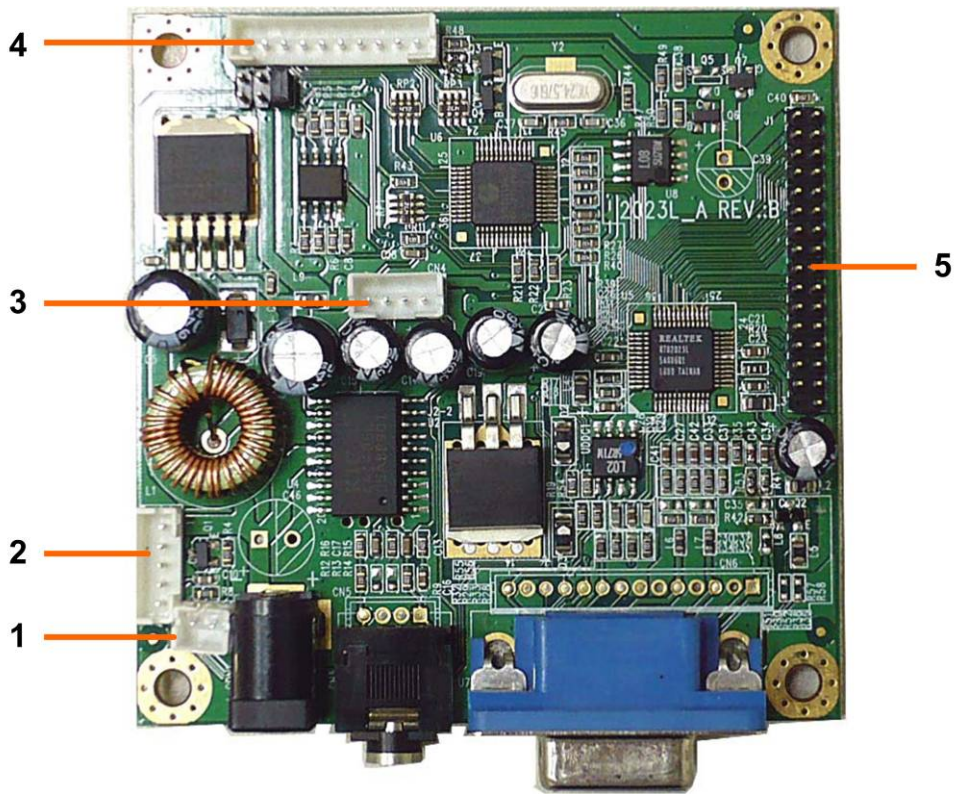


Figure 3 A/D Board Layout

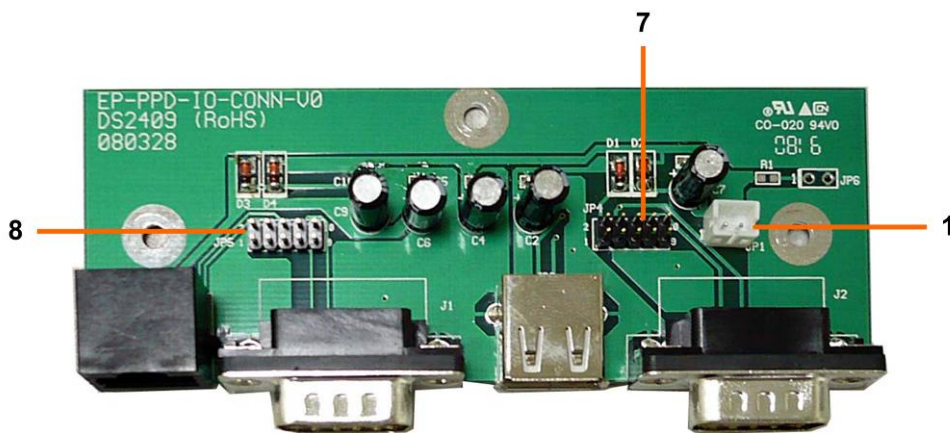


Figure 4 I/O Board Layout

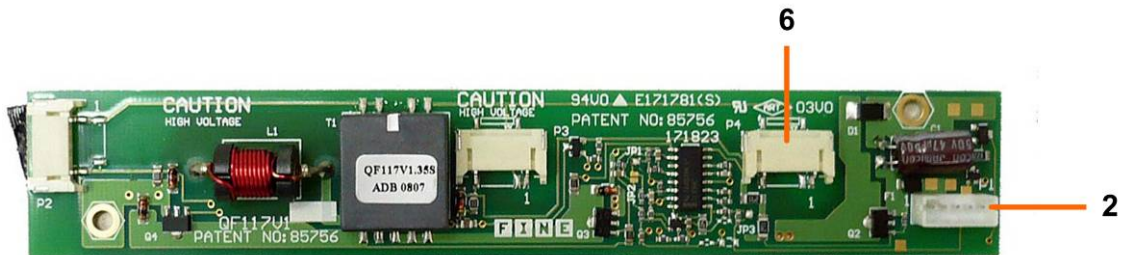


Figure 5 Inverter Layout

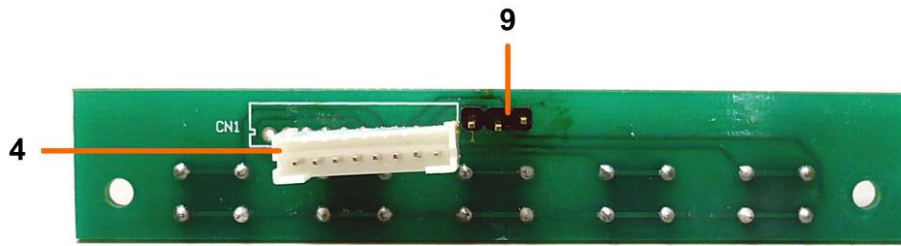


Figure 6 OSD Board Layout

No.	Part No.	Description	Price(USD)
1	CP-CBL-TM-5000-INT	Invertor Cable	
2	CP-CBL-TM-5000-PW	Power Cable	
3	NS-OS-5000-HIT-4028-82280	Speakers	
4	CP-CBL-TM-5000-OSD	OSD Cable	
5	CP-CBL-TM-5015-LVDS	LVDS Cable	
6	CP-CBL-POS-5000-HIGH-V-B13CM	Extend LCD Backlight Cable	
7	CP-CBL-TM-5000-TH-USB	Touch Cable	
8	CP-CBL-POS-5700-MMSR	MMSR Cable	
9	CP-CBL-POS-7000-LED-PW	Power Switch Cable	

### III System Disassembly

#### A. Separate the Monitor from the Base



1. Tilt the LCD panel to the horizontal level and unplug the cables.



2. Lift the hinge holder cover from the upper side edges as marked by the circles and push it down to remove it.

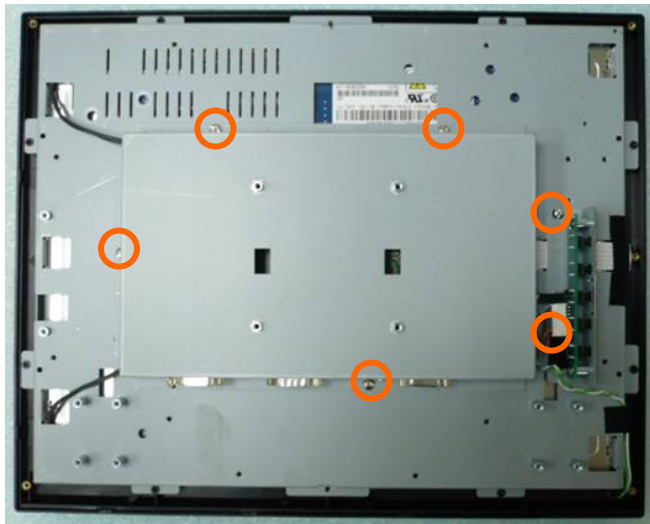


3. Loosen the screw x 4 on the hinge holder and separate the monitor from the base.

***B. Disassemble Panel Kit***

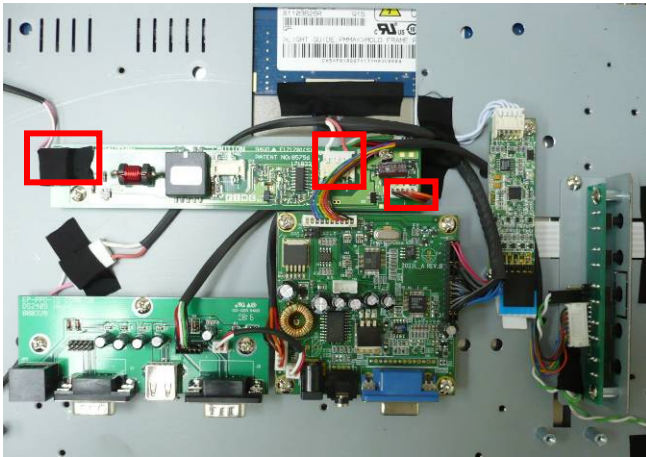


4. Loosen the screw x 7 to remove the back cover.

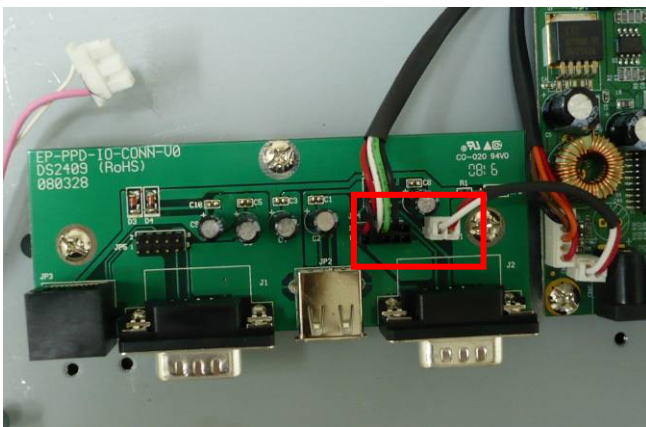
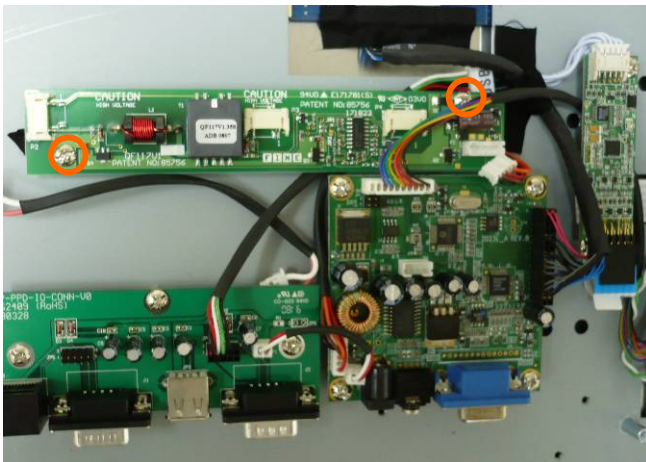


5. Loosen the screw x 7 and the hex screw x 6 to remove the bracket.

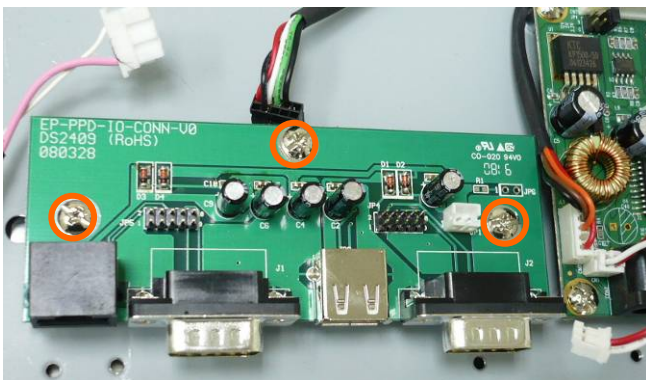


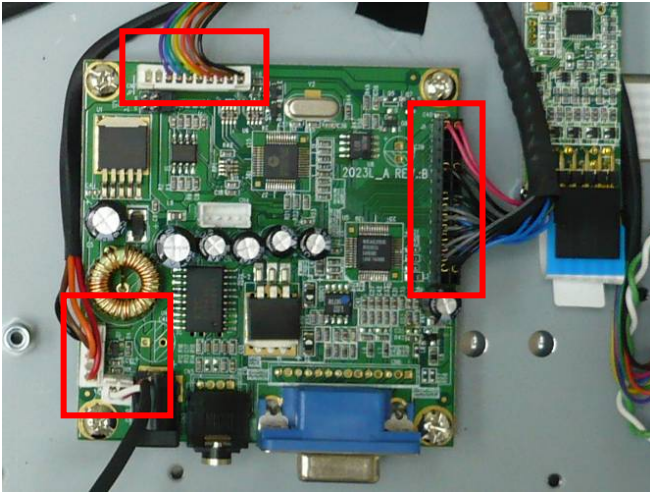


6. Disconnect the 3 cables and loosen the screw x 2 to remove the inverter.

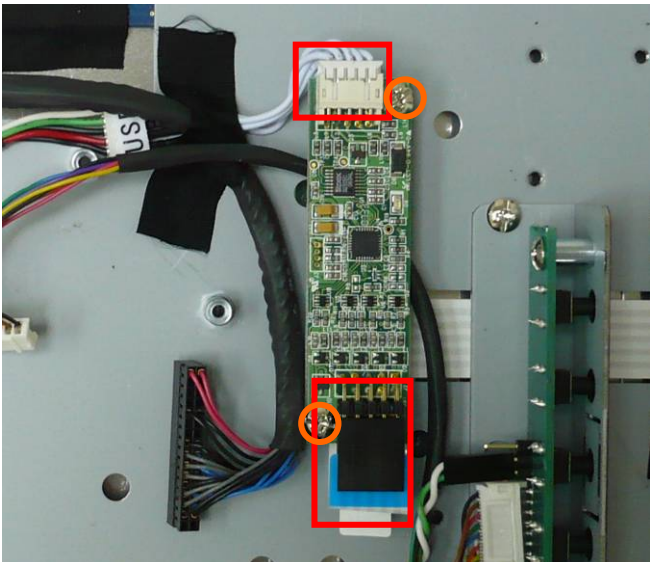


7. Disconnect the 2 cables and loosen the screw x 3 to remove the I/O board.





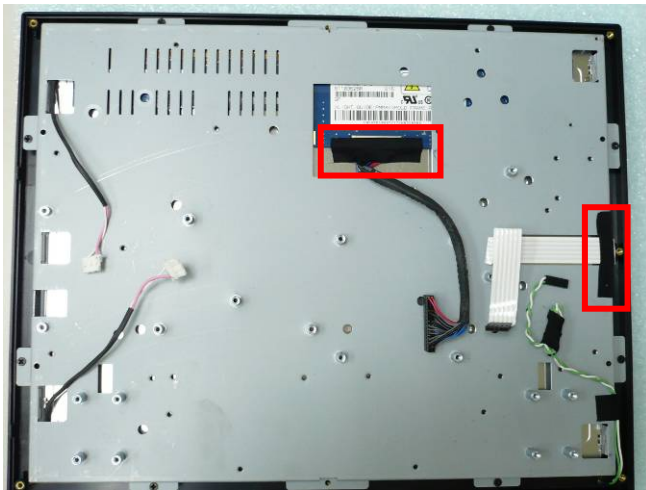
8. Disconnect the 4 cables and loosen the screw x 4 to remove the A/D board.



9. Disconnect the 2 cables and loosen the screw x 2 to remove the Touch control board.



10. Disconnect the 2 cables and loosen the screw x 4 to remove the OSD control board.



11. Tear the black tapes and disconnect the LVDS cable.



12. Loosen the screw x 8 to remove the LCD panel holder.



13. Loosen the screw x 4 to remove the LCD panel holder.



14. Remove the front cover.



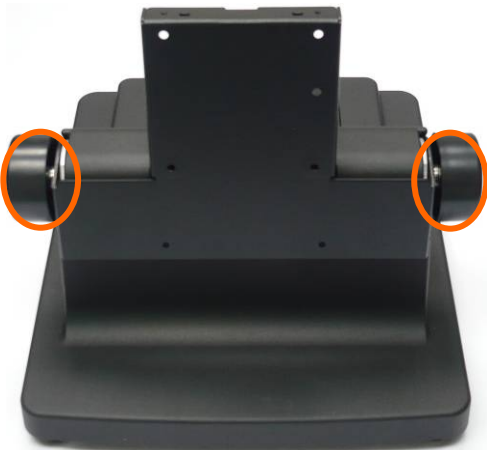
15. Remove the rubber.



*C. Disassemble Base Kit*



16. Turn over the base and loosen the screw x 2 to remove the power adaptor.



17. Remove the hinge swivels.



18. Loosen the screw x 6 on both sides to remove the hinge holder.

